

## Topic: Plants

Year: 1

Strand: Biology

### What should I already know?

- Plants can grow.

### Vocabulary

branches	parts that grow out from the tree trunk and have leaves, flowers, or fruit growing on them
bulb	a root shaped like an onion that grows into a flower or plant
common	something that is found in large numbers or it happens often
deciduous	a tree that loses its leaves in the autumn every year
evergreen	a tree or bush which has green leaves all the year round
flower	the part of a plant which is often brightly coloured and grows at the end of a stem
flowering	trees or plants which produce flowers
fruit	something which grows on a tree or bush and which contains seeds or a stone covered by a substance that you can eat
garden	a piece of land next to a house, with flowers, vegetables, other plants, and often grass
herb	a plant whose leaves are used in cooking to add flavour to food, or as a medicine
leaf /leaves	the parts of a tree or plant that are flat, thin, and usually green
petal	thin coloured or white parts which form part of the flower
plant	a living thing that grows in the earth and has a stem, leaves, and roots
roots	the parts of a plant that grow under the ground
seed	the small, hard part from which a new plant grows
stem	the thin, upright part of a plant on which the flowers and leaves grow
tree	a tall plant that has a hard trunk, branches, and leaves
trunk	the large main stem from which the branches grow
vegetable	plants such as cabbages, potatoes, and onions which you can cook and eat
vegetation	plants, trees and flowers
weed	a wild plant that grows in garden and prevents the plants that you want from growing properly
wild	animals or plants that live or grow in natural surroundings and are not looked after by people
branches	parts that grow out from the tree trunk and have leaves, flowers, or fruit growing on them
windy	when the wind is blowing

### What will I know by the end of the unit?

The names of some common garden plants

- People may grow plants in their gardens and care for them.
- They may grow flowering plants which are beautiful to look at or beans and seeds to grow plants for food.
- When plants are grown for food, this may be called a herb garden or vegetable patch.



vegetable patch



rose



poppy



sunflower

The names of some common wild plants

- A wild plant will grow by itself.
- It does not need to be cared for.
- If it grows somewhere unwanted, it may be a weed.



dandelion



daisy



buttercup



nettle



clover

Deciduous and evergreen trees

- Deciduous trees lose their leaves in the autumn every year. Their leaves are generally broad, flat and have veins running through them.
- Evergreen trees have green leaves all year round. Their leaves are generally thick, waxy and narrow like needles.

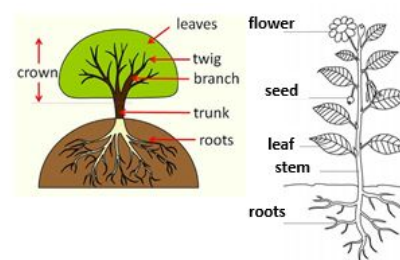


deciduous



evergreen

What are the parts of common trees and plants?



### Investigate!

- Plant a bean or a seed and watch it grow. Record your observations in a diary.
- Go on a wild plant hunt! Create a tally chart to show how many of each plant you have found and then use the information to answer questions.
- Plant some garden plants, care for them and watch them grow.
- Go on a tree hunt around the Country Park - what types of trees can you see? Collect fallen leaves and identify which tree they came from using pictures to help you. Sort the leaves between deciduous and evergreen trees.
- Label the parts of a plant showing where the leaves, flowers (blossom), petals, fruit, roots, bulb, seed, trunk, branches, and stems are.

## Topic: Plants

Year: 1

## Strand: Biology

Question 1: Leaves begin to fall from some trees in....

Start of unit:

End of unit:

put your plant in the fridge

water your plant regularly

put it in a cupboard

Question 2: To grow a plant, you must first place a      in soil.

Start of unit:

End of unit:

seed

flower

petal

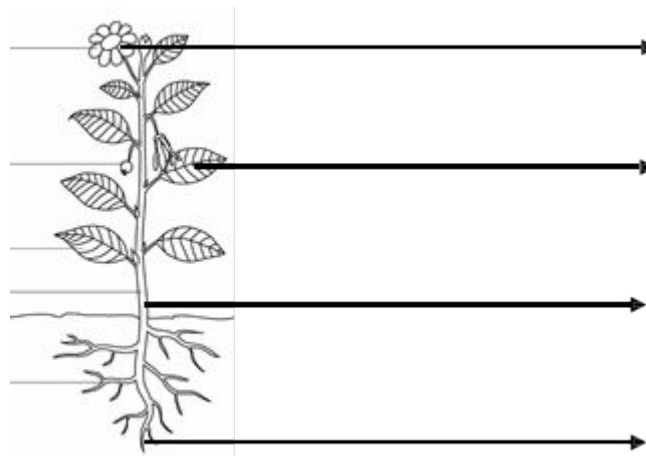
stem

Question 3: Label these parts of a plant:

Start of unit:

End of unit:

leaf  
stem  
root  
flower



Question 4: Match these words to the correct description:

Start of unit:

End of unit:

deciduous

a tree that loses its leaves in the autumn every year

evergreen

a tree that has leaves all year round

Question 5: Match these words to the correct description:

Start of unit:

End of unit:

wild

a piece of land that is part of a house, where plants, trees and vegetables can grow.

garden

animals and plants that are not looked after by people